



SmartSolutions

Enabling businesses
to operate safely and
maximize profits

Checkpoint May 2020

www.checkpointsystems.com





A New **Normal**

The COVID-19 pandemic has changed how we live and where we go. As government's begin to reveal plans to ease restrictions, businesses need to prepare and understand how they can best manage capacity constraints that adhere to new guidelines and also **instill public confidence**.

Failure to adhere to new regulations has already resulted in significant financial repercussions, from limitless fines to business licences being revoked for gross misconduct.

As businesses are adapting to the new reality of operating during a pandemic, technology holds the key to building a future that sees an increased focus on responsibility and risk management.

Maintaining a healthy atmosphere will remain an important tool in combating and eliminating the risk of reoccurrence as well as serving to reassure the public.



SmartSolutions

Checkpoint Systems provide a technological response to the crisis and support businesses manage capacity and perform temperature checks.

SmartOccupancy and **SmartTemperature** provide businesses with real-time data to help make decisions based on customizable occupancy and temperature thresholds.

Both solutions are non-invasive and are operated from a distance. With audio visual alerts, users can react in real-time contributing to a safer environment for all.

Checkpoint offers innovative and affordable solutions to help you deliver a safer environment.



Recognized for its ability to contribute to the recovery of the tourism industry, UNWTO awarded **SmartOccupancy** 'Top Solution' from more than 1,000 applicants.

The initiative was set up to identify the most disruptive, innovative technologies to make travel possible once again.

SmartOccupancy

SmartTemperature

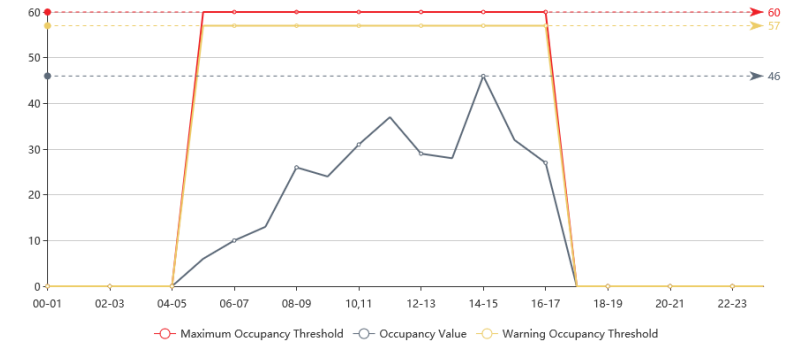
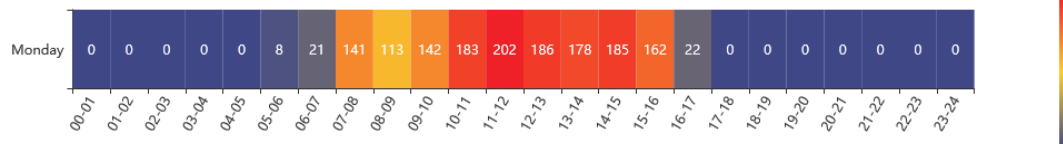


SmartOccupancy

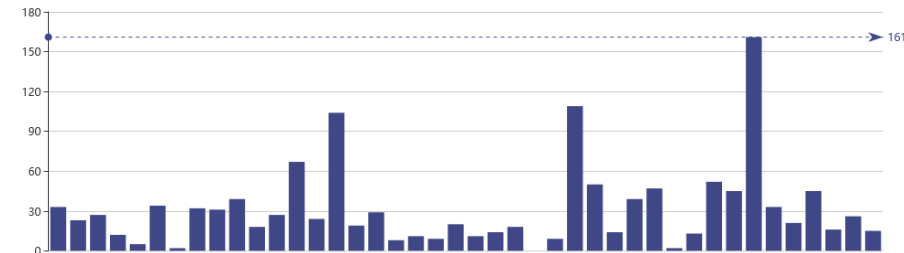
In the current climate, businesses can't work on false data. Using sensors that deliver low accuracy rates risk the sensor failing to correctly report on live occupancy levels, **presenting an immediate risk to the health and wellbeing of those inside the area.**

Checkpoint's SmartOccupancy solution provides the most accurate sensor on the market: up to 99%, enabling real-time visibility of occupancy levels so businesses can operate safely and maximize revenues. The solution can be applied to different zones within the same environment, such as distinct areas or restrooms. Managers can set and change threshold levels via the online portal.

- **MANAGES MULTIPLE COUNTING:** The sensor can count separately how many people entered and exited from each doorway.
- **CALCULATES TOTAL FROM MULTIPLE ZONES :** The solution gives a clear view of multiple thresholds with the overall total included.
- **RECOGNIZES U-TURN MOVEMENTS:** If someone enters, then exits immediately, reducing false counts.
- **PRECISE COUNTING IN CROWDED AREAS:** Other technologies lose the accuracy in crowded areas. Our SmartOccupancy solution keeps high accuracy in crowded areas.



Last Event Store Occupancy



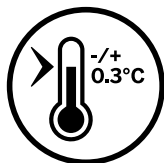
SmartTemperature

Checkpoint's SmartTemperature solution delivers reliable alerts to high body temperature readings. Utilizing AI, users can identify live, with visual indication, the temperature of those around them up to 3m away. SmartTemperature takes only the temperature on the face, minimizing false reads and respects the privacy of the individual.

Audio and visual alerts are sent to the user in real-time when the sensor detects a high temperature. Users can define a temperature threshold, if this is reached or exceeded by an individual an alert is sent to the user via tablet or desktop.



Reliable
and fast



Accuracy
-/+ 0.3°C



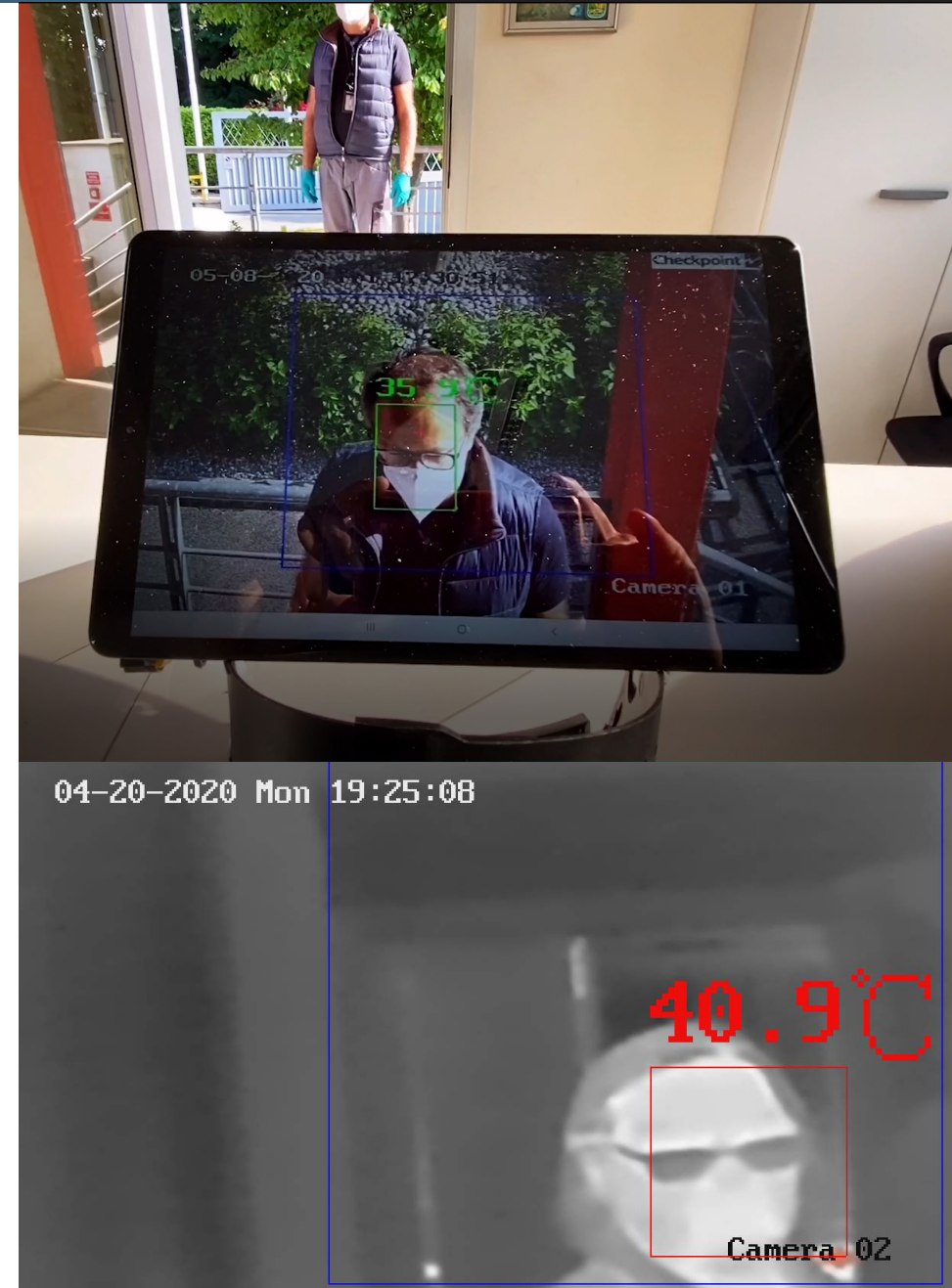
A.I. facial
temperature
measurement



Real-time
detection
and alerts

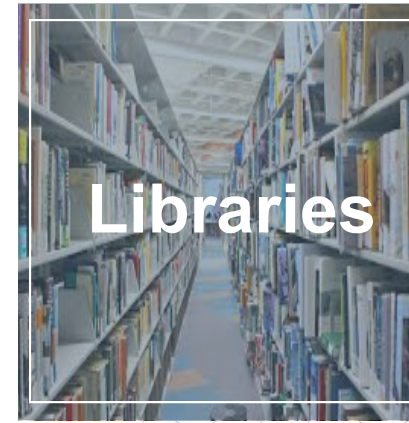


Tracks
10 people
at 3 meters



Example Installation locations include:

With SmartOccupancy and SmartTemperature, set the maximum number of occupants allowed in your facility and prevent those with a fever from entering.
Reducing risk and supporting safer environments.

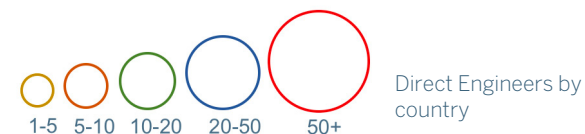
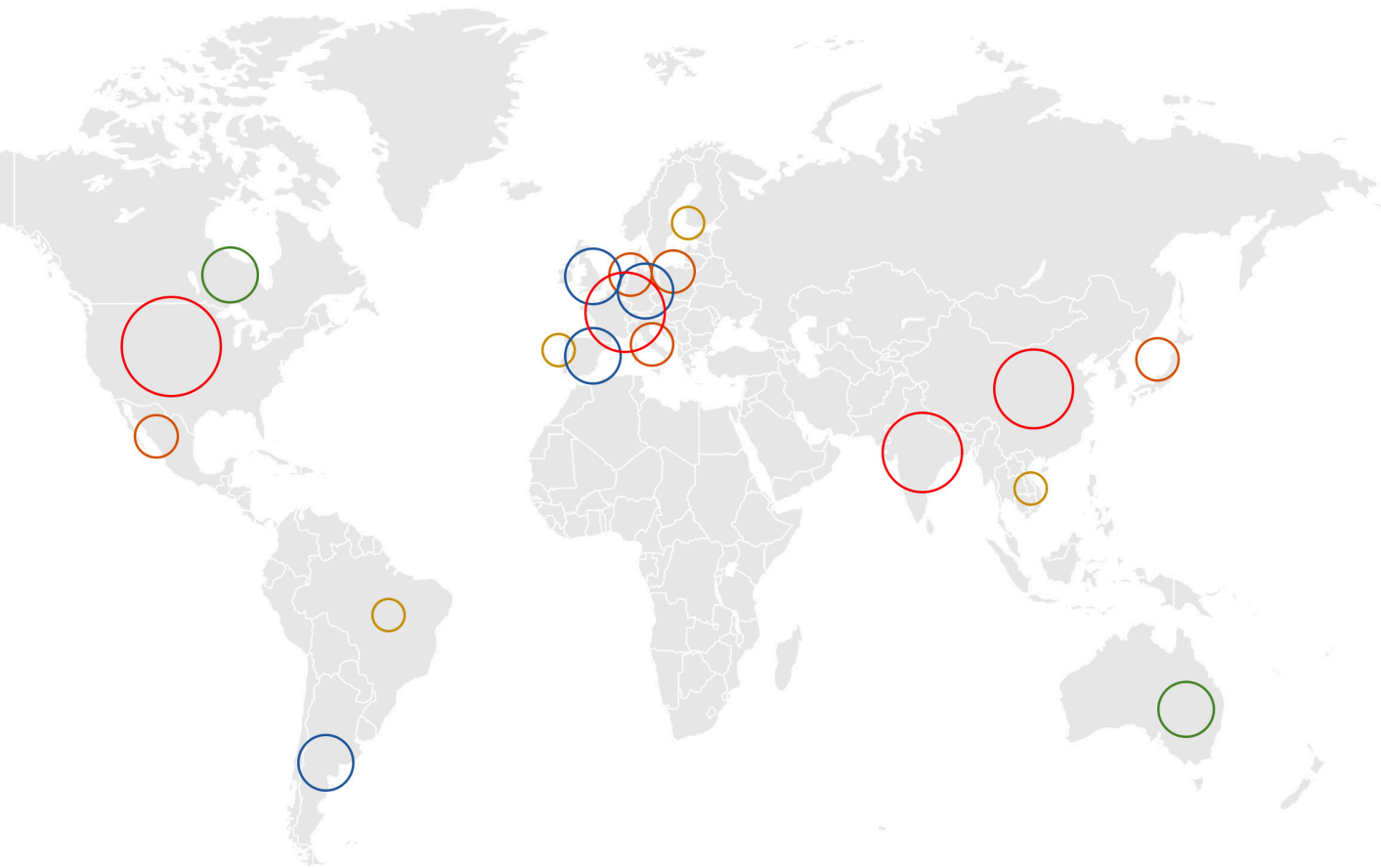


What are Checkpoint's **roll out capabilities?**

1 | **Global deployment capabilities** based on a network of field service technicians.

2 | **190,000 Service calls per year** 50% resolved remotely

3 | **60,000+ Installations per year** with direct engineers and indirect partners



About Checkpoint Systems

01

Parent Organization

CCL Industries

C\$5.1B Revenue
Over 20,000
employees
165 Facilities
40 Countries

02

Checkpoint Systems

2018 Revenue C\$713M
Operating Income
C\$101M
4800 People
26 Sites
21 Countries

03

Support Resources

56 R&D Engineers
81 Software engineers
400 Field Service
engineers

Contact us:

Checkpoint Systems

www.checkpointsystems.com

<https://checkpointsystems.com/us/SmartOccupancy/>