



RF Lables Product Catalog



Who we are

Checkpoint Systems, a division of CCL Industries, addresses two critical issues for its customers: Improving Profitability and Improving Consumer experience. With consumer demands accelerating at an extraordinary rate driven by technology, Checkpoint recognizes the challenges faced by its customers in the rapidly evolving retail market. We deliver intelligent solutions – bringing clarity and efficiency into the retail environment anytime, anywhere. Through a unique offering of software, hardware, labels, tags and connected cloud based solutions, Checkpoint optimizes operational efficiencies through analysis of real time data captured throughout the Supply Chain and in store then translating this to clear concise actions and tasks.

We provide end-to-end solutions enabling retailers to achieve accurate real-time inventory, accelerate the replenishment cycle, prevent out-of-stocks and reduce theft, thus improving merchandise availability and the shopper's experience. Checkpoint's solutions are built upon 48 years of radio frequency technology expertise, innovative high-theft and loss-prevention solutions, market-leading RFID hardware, RFID software, and comprehensive labeling capabilities, to brand, secure and track merchandise from source to shelf.

Checkpoint's customers benefit from increased sales and profits by implementing merchandise availability solutions, to ensure the right merchandise is available at the right place and time when consumers are ready to buy. Checkpoint operates in every major geographic market and employs 4,500 people worldwide.

Mission

We will be the 1st choice for source to shopper solutions that optimize success for our customer

Improving in-store customer experience

While retailers traditionally focus on detection alone, other key performance measures such as Deactivation & Reactivation which affect the store environment, shopper experience and overall ROI are also essential to improving the in-store customer experience. As the world leader in quality RF labels, Checkpoint label manufacturing sites develop and adapt innovative solutions for today's retailers – our R&D and production teams deliver best in class results in the following:



INCREASED DETECTION

With the need to protect a wider variety of products increasing, the development of smaller labels with the ability to offer similar detection to that of the standard labels has become a priority to retailers.

Checkpoint's 4x4 labels achieve the highest level of detection and our micro labels are the best performing in their class. These smaller and more powerful labels take up less visible space on product packaging, ensuring that branding is not obstructed and important consumer information is displayed.

IMPROVING THE CHECKOUT PROCESS

A fast checkout and accurate first time deactivation is crucial to minimize the number of unnecessary false alarms at store exit, improving customer satisfaction. Our labels are easily deactivated at point of check-out enabling staff to confidently and consistently deactivate RF labels quickly, delivering faster checkout speeds. Inconsistencies leads to embarrassed shoppers, decrease in alarm compliance – negatively impacting their investment in their Loss Prevention solutions.





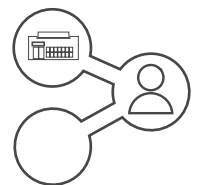
MINIMIZING REACTIVATION

There are two different forms of reactivation, static and dynamic. The former means labels spontaneously reactivate, while the latter is seen when labels reactivate when product is moved (like bottles rattling in a trolley). Lower rates improve the shopper experience and minimize unnecessary alarms. Checkpoint RF labels have the lowest reactivation rates in the industry across static testing.

ENSURING SUCCESSFUL SOURCE TAGGING

For those Retailers or Vendors that have implemented a source tagging programme involving automated label application, confidence in the ability of the RF label to survive the application process is critical in ensuring the investment delivers the highest percentage of live labels in store, every time.

Recent TUV testing revealed up to 10% of labels are 'killed' during the application process due to Electro Static Discharge – in addition to non-functioning labels found on delivered rolls. In the same test 0% of Checkpoint's labels were 'killed' during the application process.



ADDING VALUE TO A RETAILER'S OPERATIONS

Checkpoint's labels maximize in-store efficiencies and the return on investment. Shrink is on the increase across most regions and verticals, though average spend on Loss Prevention is down. For this reason, it is even more important for retailers to ensure that they are getting the best value for money. Checkpoint's labels add significant value to a retailer's operations, by enhancing the in store experience, improving operational efficiency in addition to reducing shrink by ensuring class leading label performance.



Product	Apparel & Footwear	Grocery / Food	Cosmetics	Auto Apply @Source	Visible Tagging / Visual Deterrent	General Merchandise
410EP	✓	•	•	✓	•	✓
710EP	✓	•	•	✓	•	✓
2815EP	✓	•	•	✓	•	✓
2933EP	•	•	•	✓	✓	✓
2928EP	•	•	✓	✓	✓	✓
2410EP	•	•	✓	✓	✓	✓
4210EP	•	✓	•	•	✓	•
4215EP	•	✓	•	•	•	•
7310EP	•	✓	•	•	•	•
3942EP	•	✓	•	•	•	•
3315EP	✓	•	•	✓	•	•
3710EP	•	•	✓	✓	✓	✓
3610EP	✓	•	•	✓	•	•
3210EP	•	•	✓	✓	✓	•
3110EP	✓	•	•	✓	•	✓
Microflex	✓	•	•	•	✓	•
410AA	✓	•	•	✓	•	✓
3810AA	•	•	•	✓	•	✓
410HA	•	•	•	•	•	✓
710HA	•	•	•	•	•	✓
3810HA	•	•	•	•	•	✓
815HA	✓	•	•	•	•	•
410ECON	•	•	•	•	•	✓
3810ECON	•	•	•	•	•	✓
310ECON	•	•	•	•	•	✓
40R ECON	•	✓	•	•	✓	✓



Apparel & Footwear

Our range of specialist apparel labels offer the best possible performance, along with the added features essential when integrating into brand tickets, wash / care labels or pocket tags. Patented options unique to Checkpoint provide the highest level of static tolerance, so the labels survive the integration process, while mitigating the reactivation risks associated when RF labels are left inside garments or footwear.



410EP

7103188	1.61" x 1.62" 41 x 41.1mm	2KR	•	✓	✓	•	•	•	•	✓	•	✓	•	•	•	•	•	•	•	•	•
7332573	1.61" x 1.62" 41 x 41.1mm	4KR	•	✓	✓	•	•	•	•	✓	•	✓	•	•	•	•	•	•	•	•	•
7361741	1.61" x 1.62" 41 x 41.1mm	8KR	•	✓	✓	•	•	•	•	✓	•	✓	•	•	•	•	•	•	•	•	•
10116980	1.61" x 1.62" 41 x 41.1mm	2KR	•	✓	•	•	•	•	•	✓	•	✓	✓	•	•	•	•	•	•	•	•
7190912	1.61" x 1.62" 41 x 41.1mm	4KR	•	✓	✓	•	•	•	•	✓	•	✓	•	•	✓	•	•	•	•	•	•
10100470	1.61" x 1.62" 41 x 41.1mm	4KR	•	✓	✓	•	•	•	•	✓	•	✓	•	•	✓	•	•	•	•	•	•

710EP

10139268	1.36" x 1.62" 34.6 x 41.1mm	QRL	•	✓	✓	•	•	•	•	✓	•	✓	•	•	•	•	•	•	•	•	•
7174997	1.36" x 1.62" 34.6 x 41.1mm	2KR	•	✓	✓	•	•	•	•	✓	•	✓	•	•	•	•	•	•	•	•	•
7183170	1.36" x 1.62" 34.6 x 41.1mm	4KR	•	✓	✓	•	•	•	•	✓	•	✓	•	•	•	•	•	•	•	•	•
10139264	1.36" x 1.62" 34.6 x 41.1mm	6KR	•	✓	✓	•	•	•	•	✓	•	✓	•	•	•	•	•	•	•	•	•
7248352	1.36" x 1.62" 34.6 x 41.1mm	8KR	•	✓	✓	•	•	•	•	✓	•	✓	•	•	•	•	•	•	•	•	•
10121437	1.36" x 1.62" 34.6 x 41.1mm	4KR	•	✓	•	•	•	•	•	✓	•	✓	✓	•	•	•	•	•	•	•	•
7401570	1.36" x 1.62" 34.6 x 41.1mm	4KR	•	✓	✓	•	•	•	•	✓	•	✓	•	•	✓	•	•	•	•	•	•

2815EP

7247413	1.94" x 1.05" 49.3 x 26.7mm	2KR	•	✓	✓	•	•	•	•	✓	•	✓	•	•	•	•	•	•	•	•	•
7178327	1.94" x 1.05" 49.3 x 26.7mm	4KR	•	✓	✓	•	•	•	•	✓	•	✓	•	•	•	•	•	•	•	•	•
10110088	1.94" x 1.05" 49.3 x 26.7mm	8KR	•	✓	✓	•	•	•	•	✓	•	✓	•	•	•	•	•	•	•	•	•
10107376	1.94" x 1.05" 49.3 x 26.7mm	2KR	•	•	•	•	•	•	•	✓	•	✓	•	•	•	•	•	•	✓	•	•
7153342	1.94" x 1.05" 49.3 x 26.7mm	4KR	•	✓	✓	•	•	•	•	✓	•	✓	•	•	✓	•	•	•	•	•	•

3315EP

10139551	1.73" x 0.95" 44 x 24.05mm	4KR	•	✓	•	•	•	•	•	✓	•	✓	•	•	•	•	•	✓	•	•	•
----------	-------------------------------	-----	---	---	---	---	---	---	---	---	---	---	---	---	---	---	---	---	---	---	---



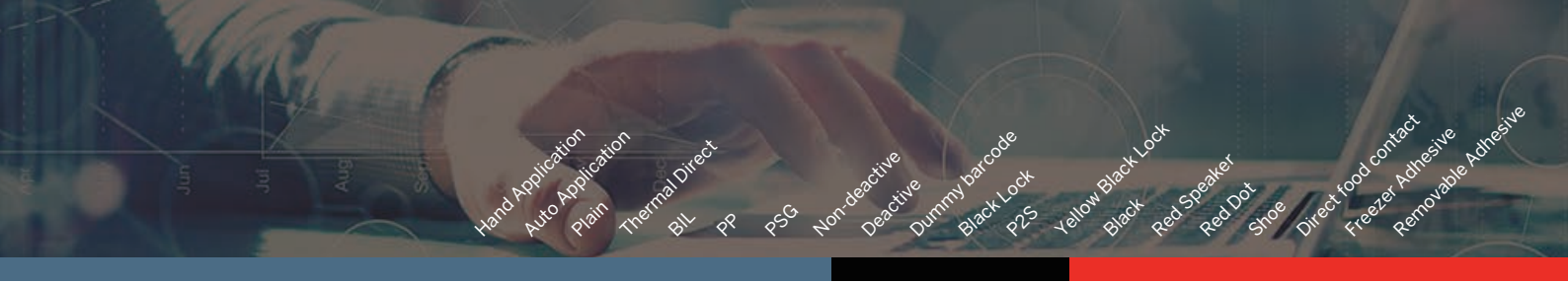
Grocery / Food

Checkpoint's purpose designed food label platform ensure that the labels offer superior performance while also being safe for use in food applications.

In addition to the rigorous internal testing conducted on these labels, third party laboratories have tested and certified Checkpoint's EP Food Labels for use with food products.

Our RF label range for grocery are guaranteed both food and microwave safe, with ISEGA and TUV certifications safeguarding consumers and retailers alike. Working with food manufacturers and grocery retailers, we adapt our solutions to be integrated in packaging @source as well as hand applied in store.





4210EP

10115312	1.46" x 1.65" 37.0 x 42.0mm	2KR	✓	•	✓	•	•	•	•	•	✓	•	•	•	•	•	•	•	•	•
10137004	1.46" x 1.65" 37.0 x 42.0mm	2KR	✓	•	•	•	•	•	•	•	✓	✓	•	•	•	•	•	•	•	•
10117757	1.46" x 1.65" 37.0 x 42.0mm	1KR	✓	•	•	•	•	•	•	•	✓	•	•	•	✓	•	•	•	•	•
10115064	1.46" x 1.65" 37.0 x 42.0mm	4KR	•	✓	•	•	✓	•	•	•	✓	•	•	•	•	•	•	•	•	•
10117753	1.46" x 1.65" 37.0 x 42.0mm	2KR	✓	•	•	•	✓	•	•	•	✓	•	✓	•	•	•	•	•	•	•
10121040	1.46" x 1.65" 37.0 x 42.0mm	2KR	✓	•	•	•	✓	•	•	•	✓	•	✓	•	•	•	•	•	•	✓
10115310	1.46" x 1.65" 37.0 x 42.0mm	2KR	✓	•	•	•	•	✓	•	•	✓	•	•	•	•	•	•	•	✓	•
10141242	1.46" x 1.65" 37.0 x 42.0mm	2KR	✓	•	•	•	✓	•	•	•	✓	•	•	•	✓	•	•	•	✓	•

7310EP

10121540	2.24" x 2.87" 57 x 73mm	QRL	✓	•	•	✓	•	•	•	•	✓	•	✓	•	•	•	•	•	•	•
----------	----------------------------	-----	---	---	---	---	---	---	---	---	---	---	---	---	---	---	---	---	---	---

4215EP

10121539	2.09" x 1.65" 53 x 42mm	4KR	✓	•	•	•	✓	•	•	•	✓	•	•	•	•	•	•	•	•	•
----------	----------------------------	-----	---	---	---	---	---	---	---	---	---	---	---	---	---	---	---	---	---	---

3942EP

NA	1.85" x 2.28" 47 x 58mm	1KR	✓	•	•	•	✓	•	•	•	✓	•	•	•	•	•	•	•	•	•
NA	1.85" x 2.28" 47 x 58mm	1KR	✓	•	✓	•	•	•	•	•	✓	•	•	•	•	•	•	•	•	•

40R ECON

9501530	1.30" 40mm	1KR	✓	•	•	•	•	•	•	•	✓	•	•	•	•	•	•	•	•	•
10111896	1.30" 40mm	1KR	✓	•	•	•	•	•	•	•	✓	•	•	•	✓	•	•	•	•	•



Cosmetics

High value, small and discreet items are an obvious target for thieves and a problem for retailers to protect. Utilizing our unique Micro EP platform, to achieve class leading performance from the world's smallest RF labels, means we can offer retailers a viable way to protect these high theft items without resorting to defensive merchandizing techniques.





Auto Apply@Source

Our Auto Apply label ranges are designed to be applied at high speed at the point of manufacture. Using patented static resilient design concepts, combined with a deep understanding of the customer application processes enables provision of the right label and support for any given situation. From food to cosmetics, and alcohol to apparel, we have the knowledge and experience to ensure items arrive in store 'shelf ready' with premium quality EAS protection.



Visible Tagging / Visual Deterrent

Moving away from the traditional, covert approach of concealing EAS labels inside packaging, the visible tagging concept is proven to reduce shrink, increase sales and improve the effectiveness of Source Tagging by amplifying the risk to potential thieves. In addition, consumer studies show that store managers and shoppers alike, both prefer visible product protection solutions. Combining clear RF labels with visible circuitry with the trademarked Black Lock logo gives the best protection EAS labels can offer.



General Merchandise

Our range of RF labels for general merchandise can be applied at source or in store, giving customers complete flexibility and freedom of choice with their EAS protection. With options to cover virtually any type of product, and the reassurance of independent testing by TUV Rheinland, along with other labels manufactured by Checkpoint, our general merchandise range are the best performing labels on the market.



Specialty - custom printed labels

Custom printing is a great way to get additional benefit from your RF security labels. We can print customer logos, safety warnings or any other Marketing or promotional messaging at one of our specialist print locations around the world. From basic 1 colour flexo prints through to complex 4 colour digital printing, we have options to cover the majority of printed label requirements.





410EP



410EP Plain
P/N: 7103188 - 2KR
7332573 - 4KR
7361741 - 8KR



410EP BC
P/N: 10116980 - 2KR



410EP P2S
P/N: 7190912 - 4KR



410EP P2S CC
P/N: 10100470 - 4KR

710EP



710EP Plain
P/N: 10139268 - QRL
7174997 - 2KR
7183170 - 4KR
10139264 - 6KR
7248352 - 8KR



710EP BC
P/N: 10121437 - 4KR



710EP SG BIL
P/N: 7196842 - 4KR



710EP P2S
P/N: 7401570 - 4KR

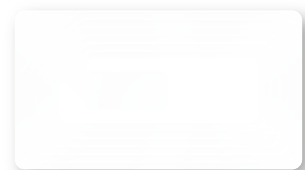
2815EP



2815EP Plain
P/N: 7247413 - 2KR
7178327 - 4KR
10110088 - 8KR



2815EP Shoe
P/N: 10107376 - 2KR
10107541 - QRL



2815EP P2S
P/N: 7153342 - 4KR

2933EP



2933EP Plain
P/N: 7666078 - 2KR



2933EP BIL
P/N: 7740096 - 2KR
10104215 - 4KR



2933EP BIL BL
P/N: 10103110 - 2KR
10138893 - 4KR

2928EP



2928EP BIL
P/N: 10114358 - 2KR



2928EP BIL BL
P/N: 10110271 - 2KR

2410EP



2410EP Plain
P/N: 10107530 - 2KR
10140633 - 4KR



2410EP BL
P/N: 10136286 - 2KR



2410EP BC
P/N: 10104320 - QRL



2410EP BIL
P/N: 7501668 - QRL
10112804 - 4KR



2410EP BIL BL
P/N: 10137714 - 2KR

4210EP



4210EP Plain
P/N: 10115312 - 2KR



4210EP BC
P/N: 10137004 - 2KR



4210EP YBL
P/N: 10117757 - 1KR



4210EP BIL
P/N: 10115064 - 4KR



4210EP BIL BL
P/N: 10117753 - 2KR



4210EP BIL BL Freezer
P/N: 10121040 - 2KR



4210EP PP Direct contact
P/N: 10115310 - 2KR



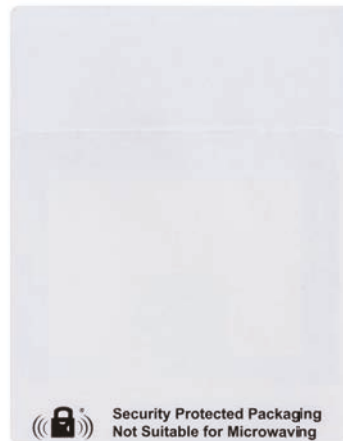
4210EP BIL YBL Freezer
P/N: 10141242 - 2KR

4215EP



4215EP BIL
P/N: 10121539 - 4KR

7310EP



(((🔒))) Security Protected Packaging
Not Suitable for Microwaving



7310EP TD BL
P/N: 10121540 - QRL

3942EP

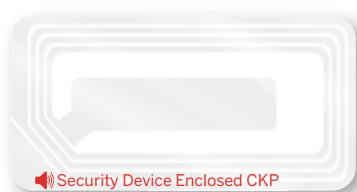


3942EP BIL
P/N: NA - 1KR



3942EP Plain
P/N: NA - 1KR

3315EP



🔊 Security Device Enclosed CKP

3315EP Red Speaker "SDE"
P/N: 10139551 - 4KR

3710EP



3710EP BIL
P/N: 10106356 - QRL
10112805 - 4KR

3610EP



3610EP P2S
P/N: 10105073 - 2KR

3210EP



3210EP BIL
P/N: 7223155 - 2KR

3110EP



3110EP Plain
P/N: 7123511 - 2KR

Microflex



Microflex 2928
P/N: 10139638 -QRL



Microflex 2410
P/N: 10139833 - QRL

410AA



410AA Plain
P/N: 7288101 - 4KR
7410149 - 8KR

3810AA



3810AA Plain
P/N: 10137848 - 4KR
10121511 - 8KR

410HA



410HA Plain
P/N: 7214751 - QRL
7551246 - 2KR



410HA BC
P/N: 7150318 - QRL
7909949 - 2KR



410HA BLK
P/N: 7283986 - QRL



410HA Plain,
Removable
P/N: 7167168 - 2KR

710HA



710HA Plain
P/N: 7232717 - QRL
10138895 - 2KR



710HA BC
P/N: 7232019 - QRL



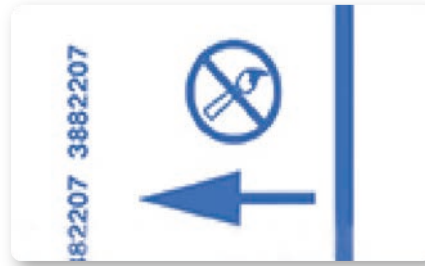
710HA BIL ND
P/N: 10106372 - 2KR

3810HA



3810HA Plain
P/N: 10137572 - 2KR

815Shoe



815 Shoe
P/N: 10121894 - 2KR

410ECON



410ECON Plain
P/N: 7699518 - QRL
10111887 - 1KR
10112019 - 2KR

410ECON BIL
P/N: 10139267 - 4KR
10139266 - 8KR



410ECON BC
P/N: 10111888 - 1KR
10112475 - 2KR



410ECON BLK
P/N: 10111904 - 1KR



410ECON TD
P/N: 10111899 - 1KR

3810ECON



3810ECON Plain
P/N: 10111897 - 1KR



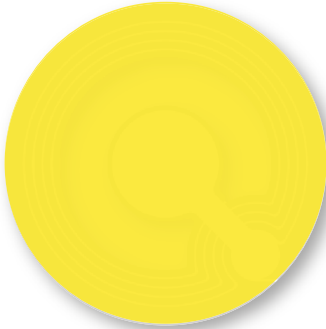
3810ECON BC
P/N: 10111898 - 1KR

310ECON



310ECON BC
P/N: 10111894 - 1KR

40R ECON

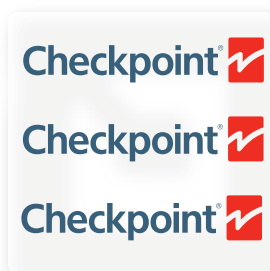


40R ECON Yellow
P/N: 9501530 - 1KR



40R ECON YBL
P/N: 10111896 - 1KR

Specialty - custom printed labels





Checkpoint Systems Italia
Via Leonardo da Vinci, 14
20090 Cusago - MI

www.CheckpointSystems.com